

## WATER REQUIREMENT

WATER REQUIREMENT AT  
 -FIELD ELEVATION  
 -WITHIN 30.5M OF FIELD  
 -DOWNSTREAM OF BACKFLOW  
 IS 354 l/min @ 6.14 Bars

## IRRIGATION LEGEND

- PRODUCT DESCRIPTION**
- HUNTER I-40-04-SS-ON-B-XX/140-06-SS-ON-B-XX, NOZZLE AS SHOWN
  - HUNTER I-40-04-SS-B-XX/140-06-SS-B-XX, NOZZLE AS SHOWN
- NOZZLE PERFORMANCE:**
- #44 @ 5.5 Bars - 88.5 l/min 20.1m RADIUS
  - #20 @ 5.5 Bars - 84.7 l/min 20.1m RADIUS
- ⊕ HUNTER IC/VI/IV ELECTRIC CONTROL VALVE SIZE AS SHOWN
  - ⊖ HUNTER HQ-44-XX-AW QUICK COUPLER VALVE (OPTIONAL)
  - ⊖ HUNTER IC-1800-M SOLID STATE METAL CABINET CONTROLLER
  - ⊖ HUNTER SOLAR-SYNC-SEN ON SITE WEATHER SENSOR
  - ⊖ WATER METER MINIMUM SIZE @ 354 l/min IS 63mm
  - ⊖ BACKFLOW PREVENTER SIZED TO SYSTEM l/min
  - ⊖ MAINLINE PIPE
  - ⊖ LATERAL PIPE
  - ⊖ SLEEVING
  - ⊗ ISOLATION VALVE LINE SIZED

## IRRIGATION NOTES

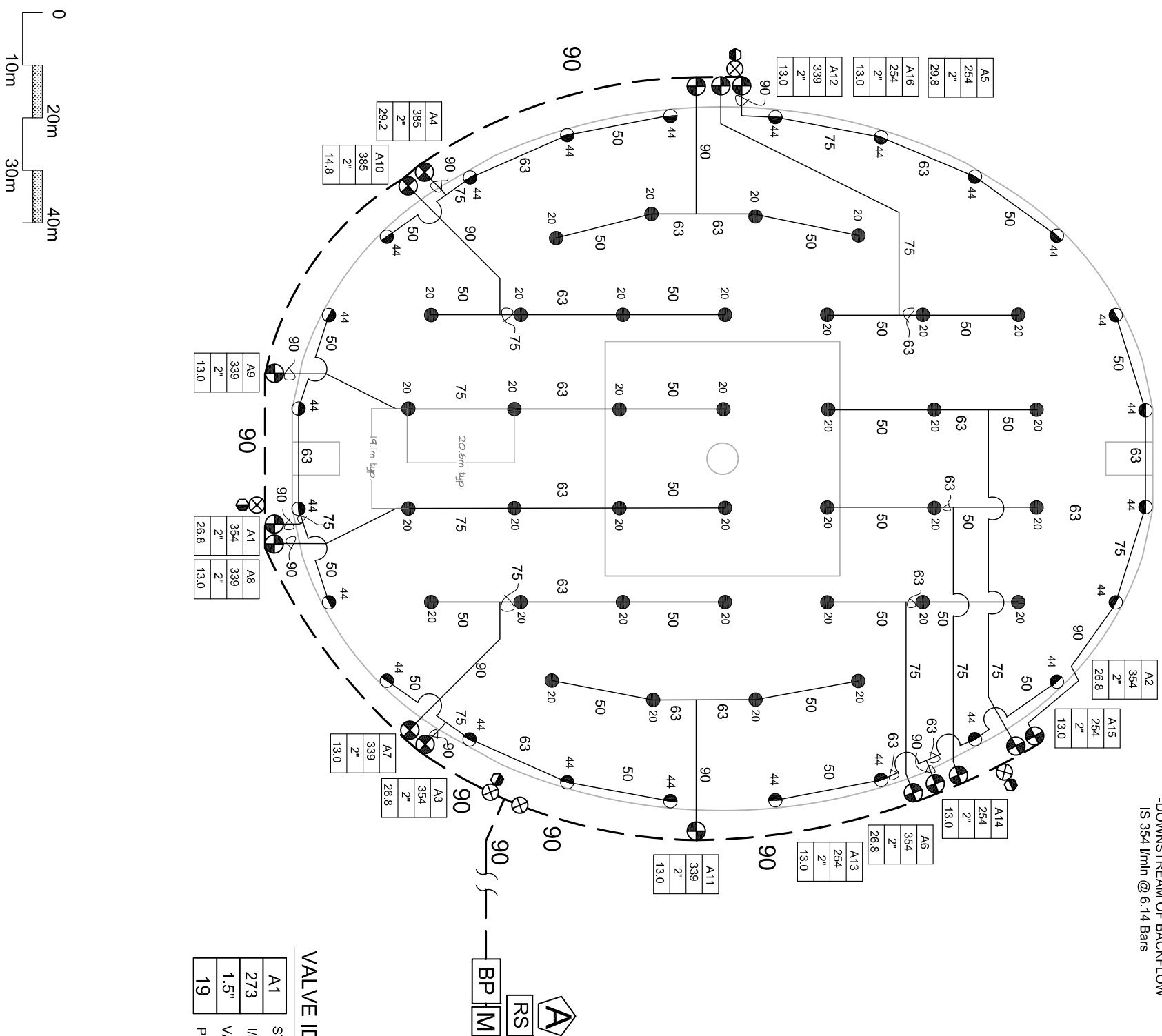
1. SPRINKLER LOCATIONS ARE TO SCALE
2. PIPE LOCATIONS ARE DIAGRAMMATIC
3. ALL SPRINKLERS TO BE INSTALLED ON 32mm SCH 80 SWING JOINTS
4. ALL COMPONENTS TO BE INSTALLED AS PER MANUFACTURERS RECOMMENDATIONS
5. MAINLINE DEPTH TO BE NO LESS THAN 460mm
6. LATERAL DEPTH TO BE NO LESS THAN 410mm
7. ELECTRIC CONTROL VALVES TO BE COVERED WITH 12" VALVE BOX
8. LOCATE VALVES/QCV'S OUT OF HIGH TRAFFIC AREAS
9. WIRE SPICE CONNECTIONS TO BE WATERPROOF
10. QCV TO BE LOCATED IN 10" VALVE BOX
11. ALL SLEEVES TO BE 2X PIPE RUN THROUGH THEM
12. INSTALL ALL COMPONENTS AS PER LOCAL, STATE, FEDERAL CODES
13. REFER TO HUNTER INSTALLATION DETAILS
14. REFER TO HUNTER CATALOG FOR PERFORMANCE SPECIFICATIONS
15. ADD HUNTER "FS" FOR DIRTY WATER VALVE
16. ADD HUNTER "AS" FOR PRESSURE REGULATED VALVE

## VALVE ID GUIDE

A1	STATION NUMBER
273	l/min
1.5"	VALVE SIZE
19	PRECIPITATION RATE mm/hr

## SYSTEM PERFORMANCE DATA

ZONE	SIZE	FLOW	PR	DU	SC (10% WINDOW)
		m/hr	mm/hr		
A1	2"	21.2	354	26.8	.81
A2	2"	21.2	354	26.8	.81
A3	2"	21.2	354	26.8	.81
A4	2"	21.2	354	26.8	.81
A5	2"	21.2	354	26.8	.81
A6	2"	21.2	354	26.8	.81
A7	2"	20.3	339	25.4	.84
A8	2"	20.3	339	25.4	.84
A9	2"	20.3	339	25.4	.84
A10	2"	20.3	339	25.4	.84
A11	2"	20.3	339	25.4	.84
A12	2"	20.3	339	25.4	.84
A13	2"	15.2	254	13.0	1.12
A14	2"	15.2	254	13.0	.84
A15	2"	15.2	254	13.0	.84
A16	2"	15.2	254	13.0	.84



Hunter Industries offers this data as a general guide for estimating purposes and offers no warranty, expressed or implied, for projects installed from this plan. Selection of flow, velocity, or energy system and of every other component shall be qualified engineer's responsibility for compliance.

AUSTRALIAN FOOTBALL FIELD

I-40 EIGHT ROW DESIGN

**Hunter**®

Hunter Industries  
 1940 Diamond Street  
 San Marcos, California 92078  
 SpecPro Technical Assistance  
 1-800-319-4796  
 www.HunterIndustries.com

SHEET

1 OF 1