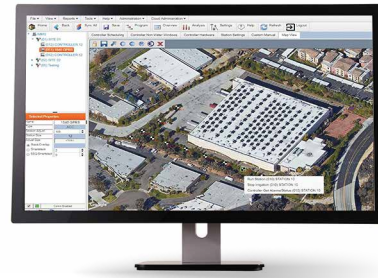


IMMS™ ONLINE

Simplify central control of legacy Hunter ACC controllers and accessories with the web- or server-based IMMS software package.

KEY BENEFITS

- Browser-based programming and communication software
- Cloud access or user-hosted enterprise versions available
- Graphical user interface with customisable, map-based navigation
- Flow monitoring and reporting
- Alarm reporting and detailed irrigation history reports
- Automatic SMS text notification of alarms to your mobile device
- Mobile view allows instant status updates and fast command functions
- Cell, Ethernet, UHF radio, and hardwire cable connectivity options
- APIs available for custom integration into management systems
- Built-in Solar Sync™ logic for smart water savings
- User administration with multiple levels of access



Add a visual dimension to central control with background map graphics

OPERATING SPECIFICATIONS

- Operates in most modern browsers (Internet Explorer® is no longer supported and may not display all screens correctly)
- Secure internet connection for web-hosted application

USER-INSTALLED OPTIONS

- Solar Sync smart weather sensors, one per controller
- Flow sensor including Flow-Sync, WFS, and other approved equals

COMMUNICATION OPTIONS

- Cellular (LTE or 3G, where applicable)
- Ethernet with RJ-45 connection
- Shared connections via UHF radio or hardwire cable
 - Hardwire, 20 mA via GCBL cable



Monitor and command IMMS-equipped controllers from your smartphone

Compatible with:



ACC Controller
Page 124



ROAM Remote
Page 137
ROAM XL Remote
Page 138



Solar Sync Sensor
Page 146

Internet Explorer is a trademark of Microsoft Corporation.

COMMUNICATION MODEL CHART

Model	Description
ACC-COM-GPRS-E*	Multi-controller cell connection
ACC-COM-LAN	Ethernet connection
ACC-COM-HWR	Radio and hardwire connection, use with:
RAD3	UHF radio (requires antenna)
ACC-HWIM	Hardwire cable terminal and driver (requires cable)

Note:

*Requires monthly cell service plan

COMMUNICATION ACCESSORIES MODEL CHART

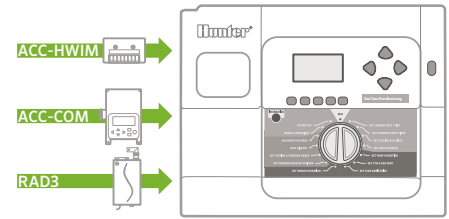
Model	Description
GCBL-XXX HARDWIRE CABLE	Add -100, -300, -500 for length in feet (30, 90, 150 m)
IMMS-ANT2	Antenna for plastic pedestal lid
IMMS-ANT3	Antenna for wall or pole mount
IMMS-ANTYAGI3	High-efficiency directional antenna (pole mount)
RA-5M	High-gain omnidirectional base antenna (roof or pole mount)
APPBRKT2	Comm module bracket for plastic pedestals

COMMUNICATION OPTIONS FOR ACC INTERFACE

Model	Purpose
ACC-COM-HWR = Hardwire/radio module*	Supports hardwire and radio communication options
ACC-COM-LAN = Ethernet module*	Supports TCP/IP in Ethernet networks in addition to hardwire and radio sharing with local controllers
ACC-COM-GPRS-E = GPRS cellular data module*	Supports mobile data connection via GPRS phone in addition to hardwire and radio sharing with local controllers

Note:

* Also supports radio and hardwire



ACC wall-mount communication components

USER-INSTALLED OPTIONS (SPECIFY SEPARATELY)

Model	Description	Purpose
ACC-HWIM	Hardwire interface module required for hardwire connections	Provides surge-protected terminals for hardwired cable connections
RAD460INT	UHF radio module (international), 440–480 MHz; consult factory for other international frequency ranges	UHF radio module for wireless connections, international only (licence and antenna required and not included)
APPBRKT2	Communication bracket for newer plastic pedestals (April 2017)	Holds comm modules and accessories in new-style plastic pedestal

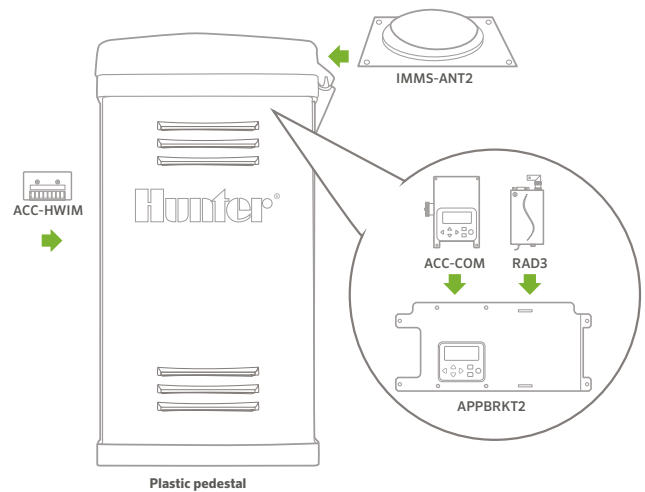
Model	Description	Options	Purpose
IMMS-CCC	Hardwire central interface	None = 120 VAC (North America) E = 230 VAC (Europe/international power) A = 230 VAC (Australia)	Hardwired central interface for connection to site via direct wire (GCBL cable)
GCBL*	100 = 30 m 300 = 90 m 500 = 150 m		Cable for all IMMS hardwired communications

Note:

* GCBL available in 300 m increments (up to 1,200 m)

RADIO ANTENNA OPTIONS (SPECIFY SEPARATELY)

Model	Description
IMMS-ANT2	Omnidirectional antenna fits ACC plastic pedestal lid
IMMS-ANT3	Omnidirectional antenna for wall or pole mount
IMMS-ANTYAG13	High-efficiency directional antenna for pole mount
RA5M	High-gain omnidirectional mast antenna for roof or pole mount



ACC plastic pedestal communication components



Smart WaterMark

Recognised as a responsible water-saving tool when used with a Solar Sync sensor